

## C-CJS Control Unit

The C-CJS unit combines the ease of computer control with the precision of mass flow-controlled gas and kerosene lines.

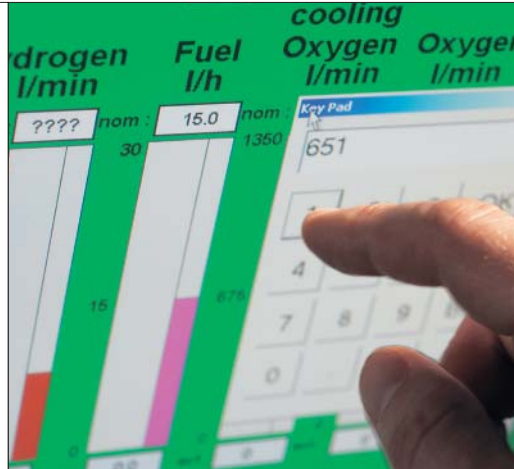
This concept offers enhanced functionality and mobility. The control unit consists of four modular ricase units. Each ricase unit is placed on top of the other, creating an ergonomic, mobile tower.

## Mobility

The ricase design ensures high mobility of the HVOF control and gas units. After the tube packets have been released, the complete unit can be pushed to the next cabinet and started up there. For field work, the ricase units are easily disassemble and transported by car or van.

- Ricase unit 0: electric control unit
- Ricase unit 1: oxygen lines
- Ricase unit 2: fuel gas and inert gas lines
- Ricase unit 3: water and kerosene lines

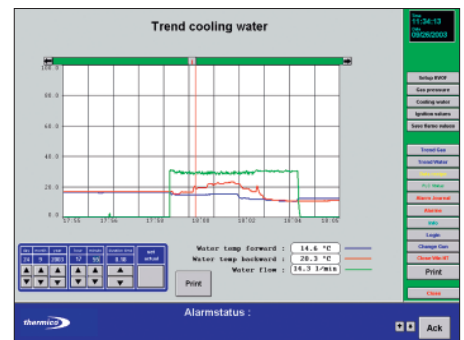
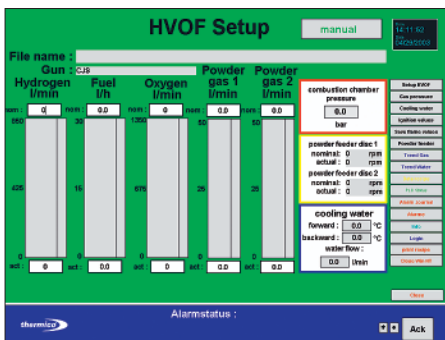




## Functionality

The C-CJS control unit is compatible with all standard HVOF torches. A PLC controls the process flow in the background, displayed on a PC. User-friendly menus simplify process operation and parameter adjustment process control. These menus include:

- torch selection
- control menu with bar chart parameter presentation
- selection of spray formula and formula memory
- incoming gas pressure control
- water-cooling flow control, ingoing and outgoing temperature
- ignition setup
- gas and kerosene flow trends
- coolant trend flow and temperature
- parameter history
- alarm history
- PLC status and service menu – single control of all actuators and sensors
- Parameter printout
- Calibration service
- Remote diagnostics
- Entry mask for programming two-step alarms of the basic parameters



A D V A N C E D C O A T I N G S O L U T I O N S

Thermico GmbH & Co. KG · Franz-Schlüter-Strasse 10-16 · 44147 Dortmund / Germany  
 Telephone: +49(0)231.31751-0 · Telefax: +49(0)231.31751-20 · E-Mail: info@thermico.biz · www.thermico.biz